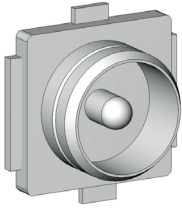


Grid:
 $\geq 5,08 \text{ mm}$
 $\geq 200 \text{ Mil}$

U.FL Plugs see pages 37 - 38



Example: U.FL Plug

Centering Area $\pm 0,2 \text{ mm}$

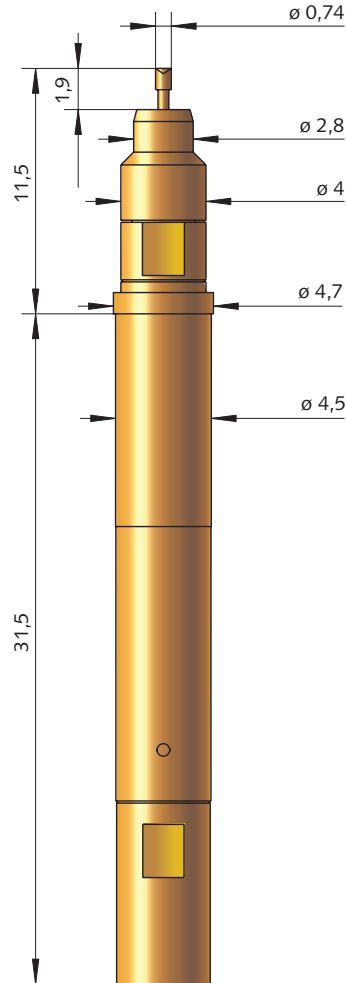
Mechanical Data

| | Outer Conductor | Inner Conductor |
|-----------------|-----------------|-----------------|
| Working Stroke: | 4,0 mm | 2,0 mm |
| Maximum Stroke: | 5,0 mm | 3,7 mm |

Spring Force

The Spring-Loaded Inner- and Outer Conductors are available with different Spring Forces. To create the Ordering No. the individual values must be added together (see also „Ordering Example“ below).

| | | | | |
|-------------------------------------|-----|-----|-----|-----|
| Spring Force of Inner Conductor (N) | 1,3 | 2,0 | 1,3 | 2,0 |
| Spring Force of Outer Conductor (N) | 4,0 | 4,0 | 8,0 | 8,0 |
| Character of ordering | 53 | 60 | 93 | 99 |



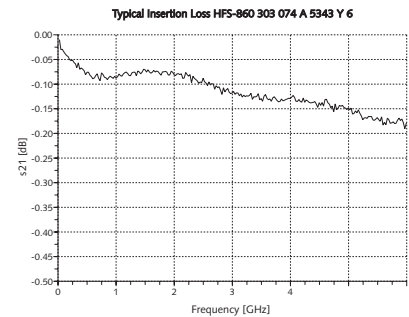
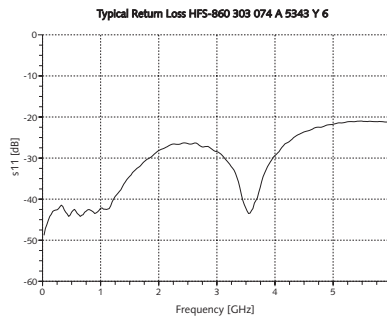
Operating Temperature: -40 up to $+80 \text{ }^\circ\text{C}$

Electrical Data

Frequency Range with HFS-860: up to 6 GHz

Current Rating

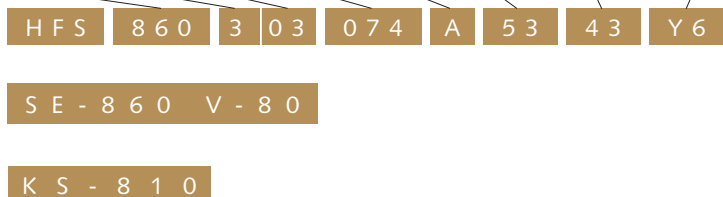
| | |
|--------------------------------|-----------------------------|
| Outer Conductor: | 8–10 A |
| Inner Conductor: | 2–3 A |
| R_1 typical Inner Conductor: | $\leq 10 \text{ m } \Omega$ |
| Impedance Test Probe: | 50 Ω |
| Impedance Cable: | 50 Ω |



Ordering Example:

| Series | Tip Material 2 = Steel 3 = BeCu | Tip Style | Tip Diameter (1/100 mm) | Plating A = Gold | Spring Force (dN) | Outer-Plunger | Type |
|--------|---------------------------------------|-----------|----------------------------|---------------------|----------------------|---------------|------|
|--------|---------------------------------------|-----------|----------------------------|---------------------|----------------------|---------------|------|

Test Probe for Frequency Range up to 6 GHz
 Connector with RF-Coaxial Cable Multiflex, pre-wired with:
 Probe Side, MCX Plug, straight
 Interface-Side, SMA Plug, straight
 Cable length: 0,8 m
 Receptacle



Further Information see page „Accessories“.

All specifications are subject to change without prior notification