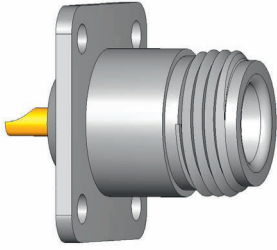


# HFS-810 / HFS-840

N 50 Contacting

**Grid:**  
 ≥ 10,5 mm  
 ≥ 414 Mil

N 50 Plugs/Jacks see pages 35 - 36



Example: 23 N-50-0-1

**Note:**

Type „Q“ only usable up to 2 GHz.  
**Higher frequencies on request.**

**Centering Area:** ± 0,8 mm

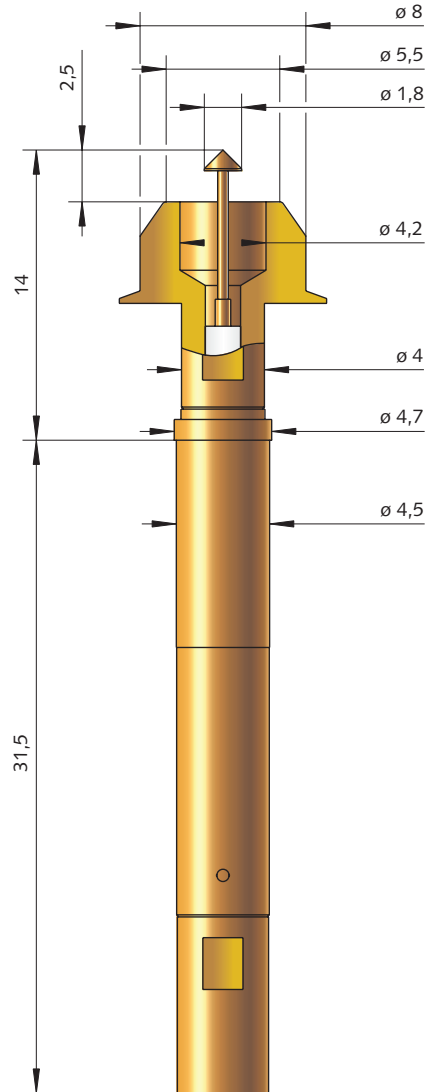
**Mechanical Data**

	Outer Conductor	Inner Conductor
Working Stroke:	4,0 mm	2,0 mm
Maximum Stroke:	5,0 mm	3,7 mm

**Spring Force**

The Spring-Loaded Inner- and Outer Conductors are available with different Spring Forces. To create the Ordering No. the individual values must be added together (see also „Ordering Example“ below).

Spring Force of Inner Conductor (N)	1,3	2,0	1,3	2,0
Spring Force of Outer Conductor (N)	4,0	4,0	8,0	8,0
Character of ordering	53	60	93	99



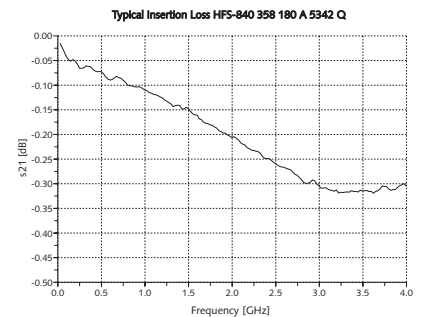
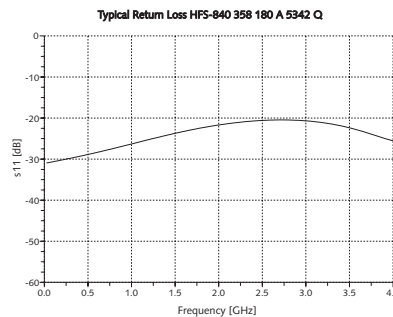
**Operating Temperature:** – 40 up to + 80 °C

**Electrical Data**

Frequency Range with HFS-810: up to 2 GHz

**Current Rating**

Outer Conductor:	8–10 A
Inner Conductor:	2–3 A
R <sub>i</sub> typical Inner Conductor:	≤ 10 m Ω
Impedance Test Probe:	50 Ω
Impedance Cable:	50 Ω



**Ordering Example:**

Series	Tip Material 2 = Steel 3 = BeCu	Tip Style	Tip Diameter (1/100 mm)	Plating A = Gold	Spring Force (dN)	Outer-Plunger	Type
--------	---------------------------------------	-----------	----------------------------	---------------------	----------------------	---------------	------

Test Probe for Frequency Range up to 2 GHz:

Test Probe for Frequency Range up to 4 GHz:

MCX-Connector with RF-Coaxial Cable RG 316 / U pre-wired, length 0,7 m (Special lengths on request):  
 Receptacle:

HFS	810	358	180	A	53	42	Q
HFS	840	358	180	A	53	42	Q
SE-810 V-U (Grid >5,08 mm)				SE-810 V (Grid 5,08 mm)			
KS - 810							

Further Information see page „Accessories“.